

GOSECURE TITAN® PLATFORM

Expanded protection, broad visibility and scalability in a managed detection and response platform

When you are responsible for managing security, your priority is to deploy a trusted platform that responds to threats in real-time.



PROOF OF PROTECTION

The GoSecure Titan® platform enables organizations to see and respond to potential threats. With early warnings, the GoSecure Titan platform can block many attacks before they can impact an organization. And with the GoSecure Titan platform, expert human threat hunters help ensure that threats are addressed quickly and effectively to protect the organization from significant damage. This activity is all visible within the platform and views are customizable with options based on the depth of detail and type of information needed by your organization.



CENTRALIZED PROTECTION

The GoSecure Titan platform centralizes critical data from GoSecure Titan Managed Detection and Response (MDR) services into a single pane of glass. Our platform not only provides broad visibility and better protection—checking for three times more unique event types than the industry standard—but it also allows organizations to detect more threats, mitigate faster and lower overall security costs.



EXPANDED PROTECTION

With the GoSecure Titan platform, organizations experience expanded protection in a complete MDR solution. Together, NextGen Antivirus (NGAV) and Endpoint Detection and Response (EDR) deliver full-spectrum endpoint detection to expose new malware, ransomware, and fileless threats that circumvent legacy endpoint solutions. In addition, it includes robust network detection and response (NDR) capabilities, combining full packet capture, intrusion detection, log capture, and sandboxing, which provides detailed visibility into suspicious behavior on the network. The platform extends detection across the entire path of a threat.

NO MORE ALERT FATIGUE

- The core of the GoSecure Titan platform offers easy to understand alerts that predict malicious intent with a level of certainty.
- Alerts and dashboards ensure that efforts to address threats can be prioritized more effectively.
- GoSecure Titan's automated capabilities contain and terminate known threats before they can execute.
- Human threat hunters will be able to focus on more advanced attacks requiring immediate attention.

Comprehensive coverage matters, just ask Scott Howell at leading North American law Firm McInnes Cooper. *"When I asked about the potentially infected machine GoSecure told me 'We covered you first, before even telling you that you have a problem.' And that specific event made us sign up the next day."*

- Scott Howell, Managing Director of Technology and Information Services.

BUILT FOR SCALE

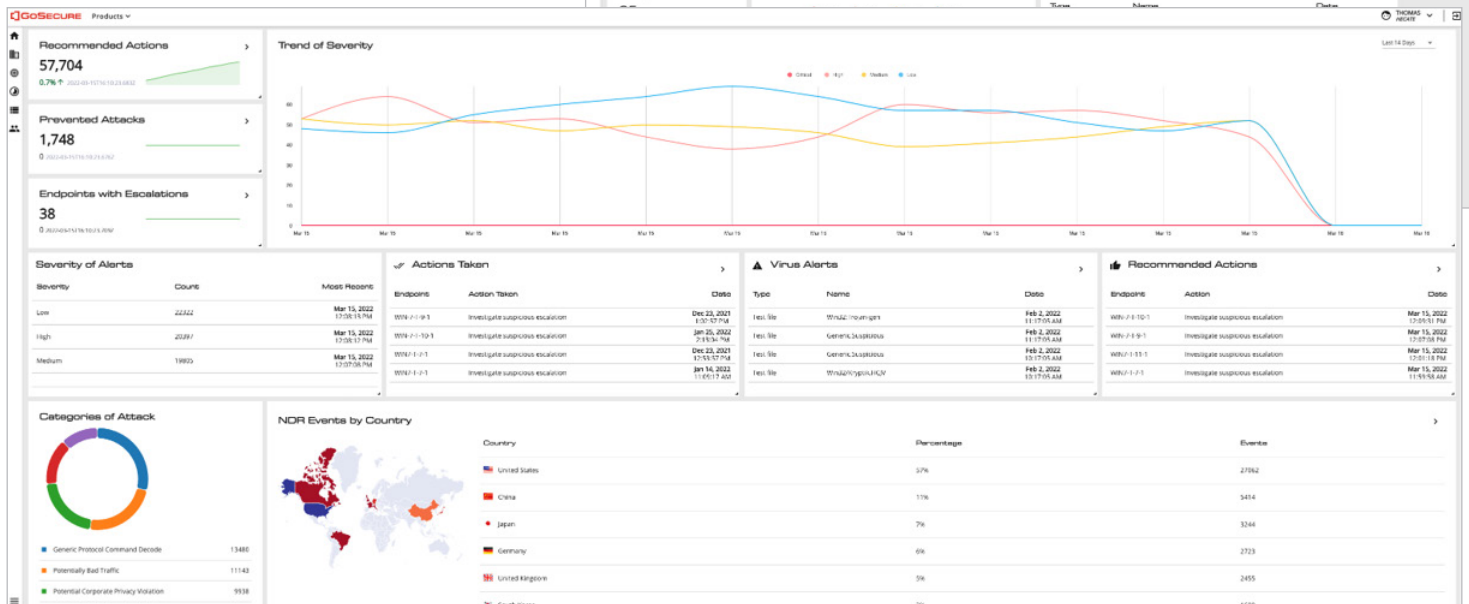
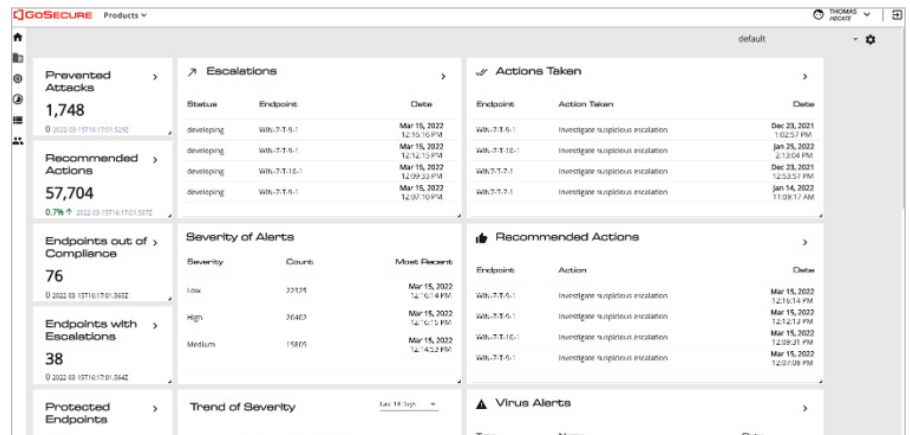
The GoSecure Titan platform is built to scale with you. It is developed on a data lake back-end and is delivered entirely in the Cloud. The platform consists of three main components:

- Endpoint Sensors
- Collectors
- Real-time Threat Intelligence

With threat intelligence backed by the team at GoSecure Titan Labs, the platform is regularly updated with detection capabilities to address the latest attack vectors.

CUSTOMIZATION WITH A CLICK

The GoSecure Titan dashboard is completely customizable to your specific use cases. Share critical information with executives. Dive deep into the data for technical analysis. See all the details of the attacks that have been prevented and understand the health of your endpoints – in a simple, understandable view.



LEARN MORE

www.gosecure.net/gosecure-titan-platform

CONTACT US

www.gosecure.net/sales-contact

1-855-893-5428

ABOUT GOSECURE

GoSecure is a recognized cybersecurity leader and innovator, pioneering the integration of endpoint, network, and email threat detection into a single Managed Detection and Response service. The GoSecure Titan platform delivers predictive multi-vector detection, prevention, and response to counter modern cyber threats. GoSecure Titan MDR offers a detection to mitigation speed of less than 15 minutes, delivering rapid response and active mitigation services that directly touch the customers' network and endpoints. For over 10 years, GoSecure has been helping customers better understand their security gaps and improve their organizational risk and security maturity through MDR and Advisory Services solutions delivered by one of the most trusted and skilled teams in the industry. To learn more, please visit: <https://www.gosecure.net>.